

➤ Production Standard : ABNT NBR 6943:2000

➤ Malleable cast iron standard : NBR6590

Jianzhi brand thread pipe fitting uses Grand A malleable cast iron to ensure the top quality compared with other suppliers.

Tensile strength: $\geq 350\text{Mpa}$

Elongation: $\geq 10\%$

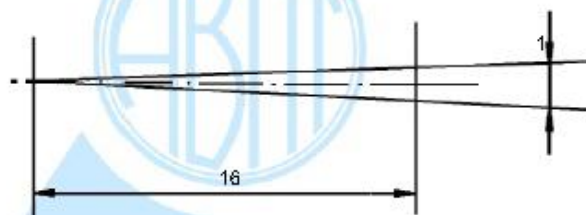
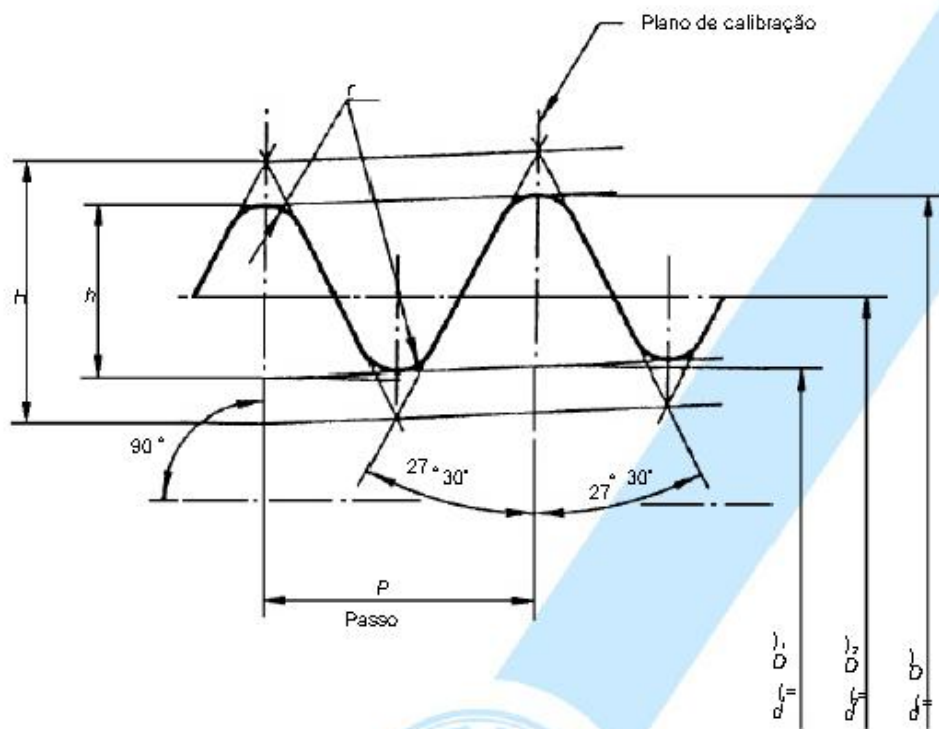
Hardness: $\leq \text{HB150}$

Although the material of the FMP30006 also meets the ABNT standards, we adopt higher standards to ensure that our products can be used in a wider and more severe environment, which is one of the reasons why the quality of our products is better than other brands.

	NBR6590		Jianzhi standard
Malleable cast iron	FMP30006	or	FMP35010
	FMP35010		

➤ Thread standard: NBR NM-ISO7-1

external threads are taper (R), image from NBR NM-ISO7-1



$$H = 0,960\,237\,P$$

$$h = 0,640\,327\,P$$

$$r = 0,137\,278\,P$$

Figura 2 - Rosca cônica

internal thread is parallel (RP), image from NBR NM-ISO7-1

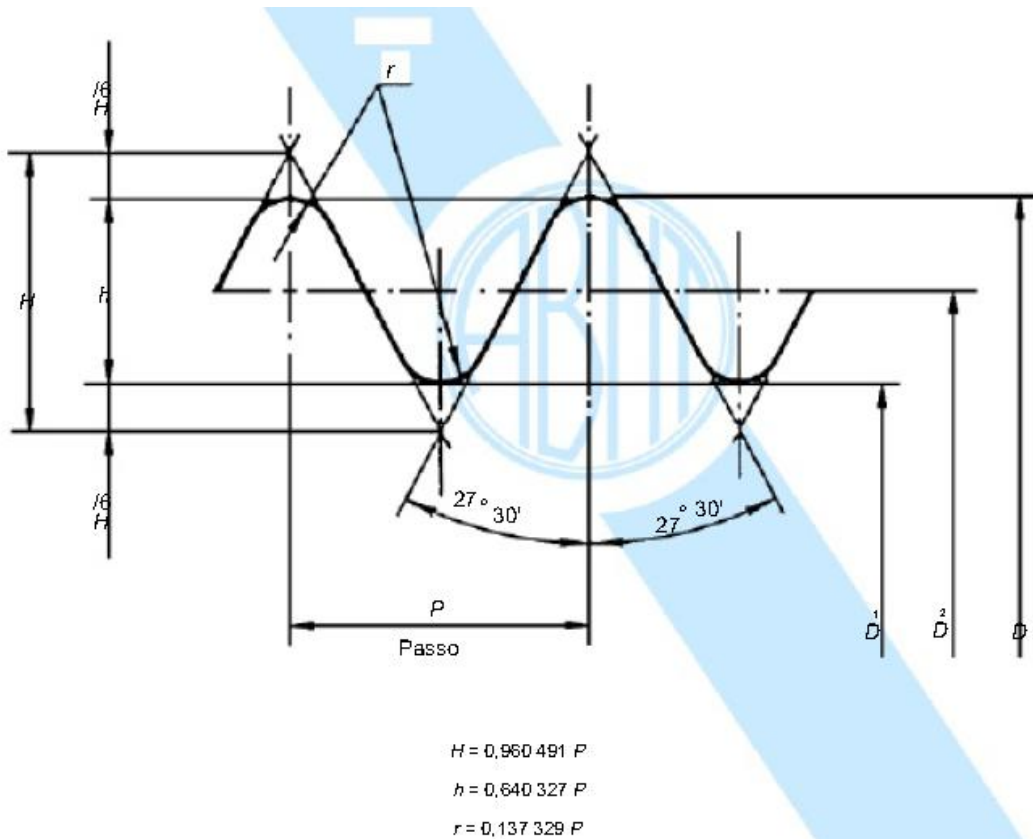


Figura 1 - Rosca paralela

for lock nuts, coupling nuts, adapter elbow nuts and PE adapter sleeve nuts, threads are in accordance with NBR 8133 standard

The angles of fitting thread axis can have a maximum variation of $\pm 0.5^\circ$ according to NBR NM-ISO7-1, Jianjin axes of the screw thread accuracy is $\pm 0.3^\circ$, higher 40% than NBR NM-ISO7-1.

	NBR NM-ISO7-1	Jianzhi standard
Axis angle	$\pm 0.5^\circ$	$\pm 0.3^\circ$

Turns of thread according NBR NM-ISO7-1 should be between ± 1 and $\pm 1 \frac{1}{2}$, Jianzhi turns of thread accuracy is only ± 1 . Higher than NBR NM-ISO7-1

	NBR NM-ISO7-1	Jianzhi standard
Turns of thread of external thread	± 1 -- $\pm 1 \frac{1}{2}$	Only ± 1
Turns of thread of internal thread	$\pm 1 \frac{1}{4}$ --- $\pm 1 \frac{1}{2}$	± 1

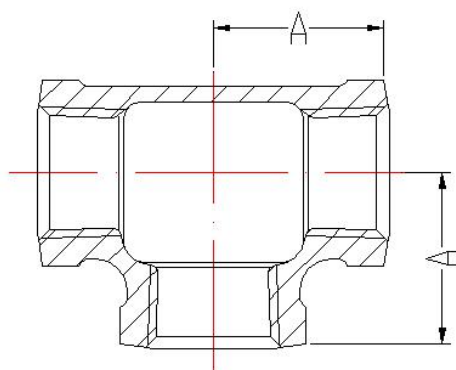
➤ Galvanization: According to NBR6323

Jianzhi pipe fitting can offer customer in black or galvanized finishing. The surface related mass of the zinc coating shall be not less than 500g/m², as an average of 5 fittings, this corresponds to a medium layer thickness of 70μm. Zinc coating on the internal surface of the fitting is continuous, the same thickness as external surface, with the exception of machined black internal thread. The zinc coating is free from zinc blisters, zinc burrs ,non-metallic remainders. The surface of the fittings is free of polycyclic aromatic hydrocarbons.

➤ Dimensions and tolerances : NBR6943

Please check our product pages or download our production catalog.

Dimensions samples(mm)



Fitting size	in	1/4	3/8	1/2	3/4	1	1 ¹ / ₄	1 ¹ / ₂	2	2 ¹ / ₂	3	4	6
	mm	8	10	15	20	25	32	40	50	65	80	100	150
A		20	24	27	32	37	44.5	48.5	57	68.5	77.5	96.5	129

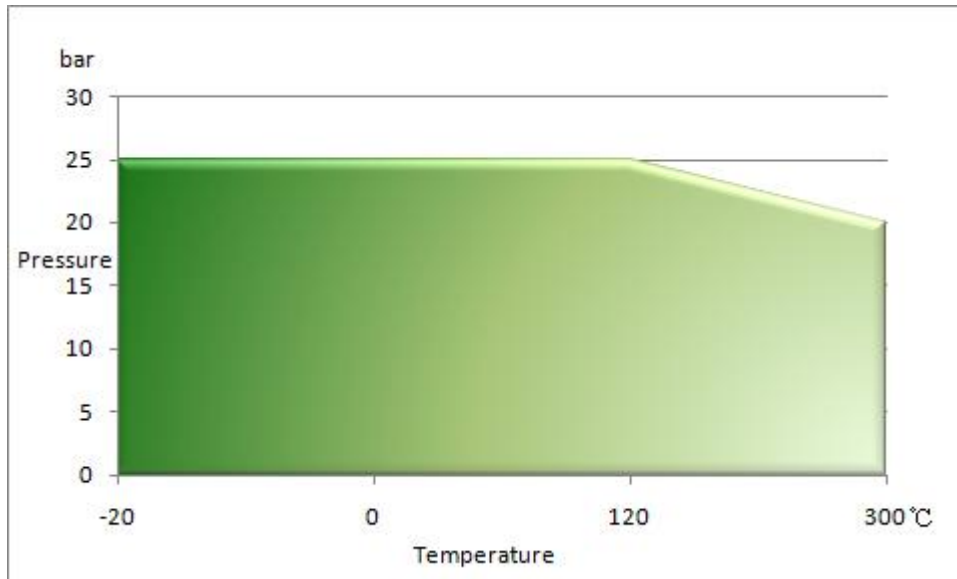
Tolerance on length (mm)

Dimension	Tolerance
Up to 30	± 1.5
More than 30 up to 50	± 2.0
More than 50 up to 75	± 2.5
More than 75 up to 100	± 3.0
More than 100 up to 150	± 3.5
More than 150 up to 200	± 4.0
More than 200	± 5.0

➤ Permissible working pressure and temperature

Jianzhi fittings of all sizes are suitable for the maximum permissible working pressure

within the temperature ranges given in the following chart.



1bar = 100kPa =14.5PSI =0.1Mpa

➤ Test and inspection:

All Jianzhi pipe fittings are inspected strictly with the specifications of standard of NBR6943. Some points are higher than NBR6943 to ensure our wonderful quality.

Air tightness test: higher 20% than NBR6943, according NBR6943 pipe fittings are test by one of the following methods


- a) Pneumatic pressure of minimum 0.5MPa with the fitting fully immersed in water or oil.
- b) Hydrostatic pressure of minimum 2.0MPa.

Jianzhi adapt 0.6MPa pneumatic pressure, higher 20% than NBR6943, to ensure each fittings with fantastic performance while using.

	NBR6943	Jianzhi standard
Pneumatic pressure	5 bar / 0.5Mpa	6 bar / 0.6Mpa

➤ Marking:



All Jianzhi pipe fitting will mark  as our brand. Each pipe fittings with this brand marking is ensured with trustable quality and our highest compensation standard.

- Quality assurance system: ISO 9001:2015
- Occupational health and safety management system: OHSAS 18001:2007
- Environmental management system: ISO 14001:2015

➤ Fitting size and normal size(DN)

Fitting size	Normal size (DN)
1/8	6
1/4	8
3/8	10
1/2	15
3/4	20
1	25
1 1/4	32
1 1/2	40
2	50
2 1/2	65
3	80
4	100
5	125
6	150